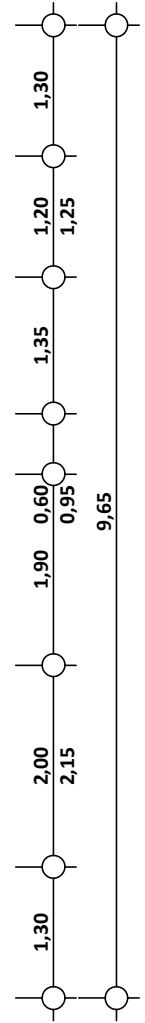
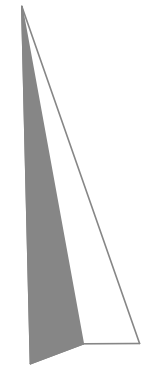
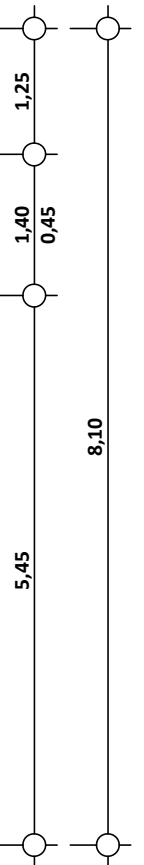
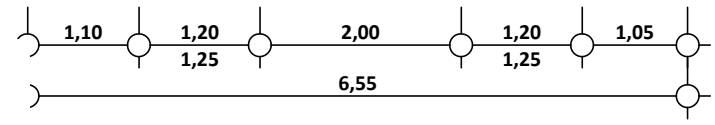
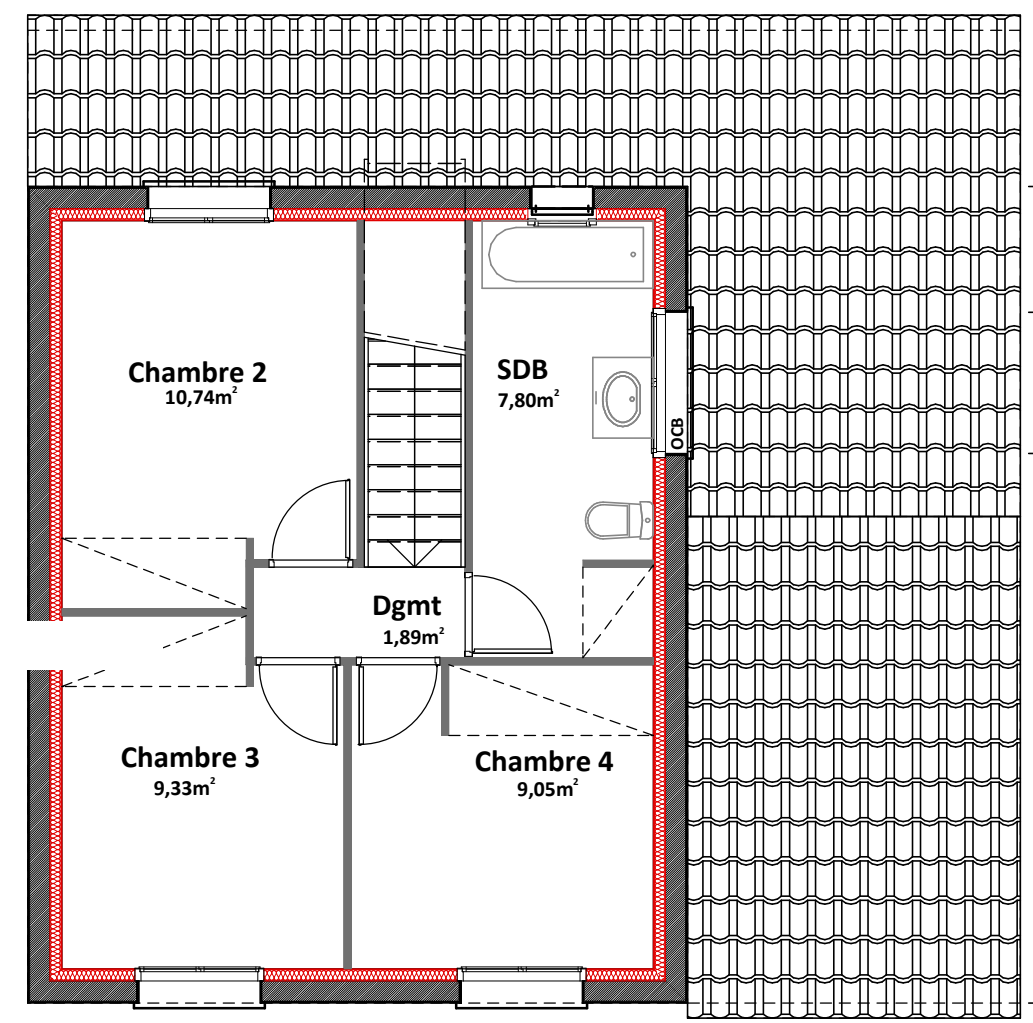
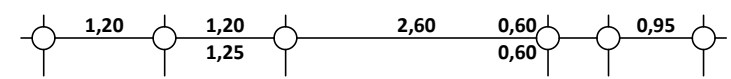


**NORD**



Commune de PIA  
 PYRENEES-ORIENTALES 66  
 Lotissement  
 Section AP n°  
 Lot n°41  
 Surface terrain : 384m<sup>2</sup>  
 Surface habitable : 102.45m<sup>2</sup>  
 Garage : 15.00m<sup>2</sup>  
 Surface taxable : m<sup>2</sup>  
 Surface de planchers : m<sup>2</sup>  
 Emprise au sol : 95.05m<sup>2</sup>



		CONSTRUCTION d'une MAISON INDIVIDUELLE		
		APS 1		
REZ-DE-CHAUSSEE/ETAGE	Ech. 1/75		22/06/2015	